



BILTON TOWERS
MARBLE ARCH, W1H
Price On Application Leasehold

T. +44 (0) 20 7935 0011
E. enquire@napierwatt.co.uk
WWW.NAPIERWATT.CO.UK

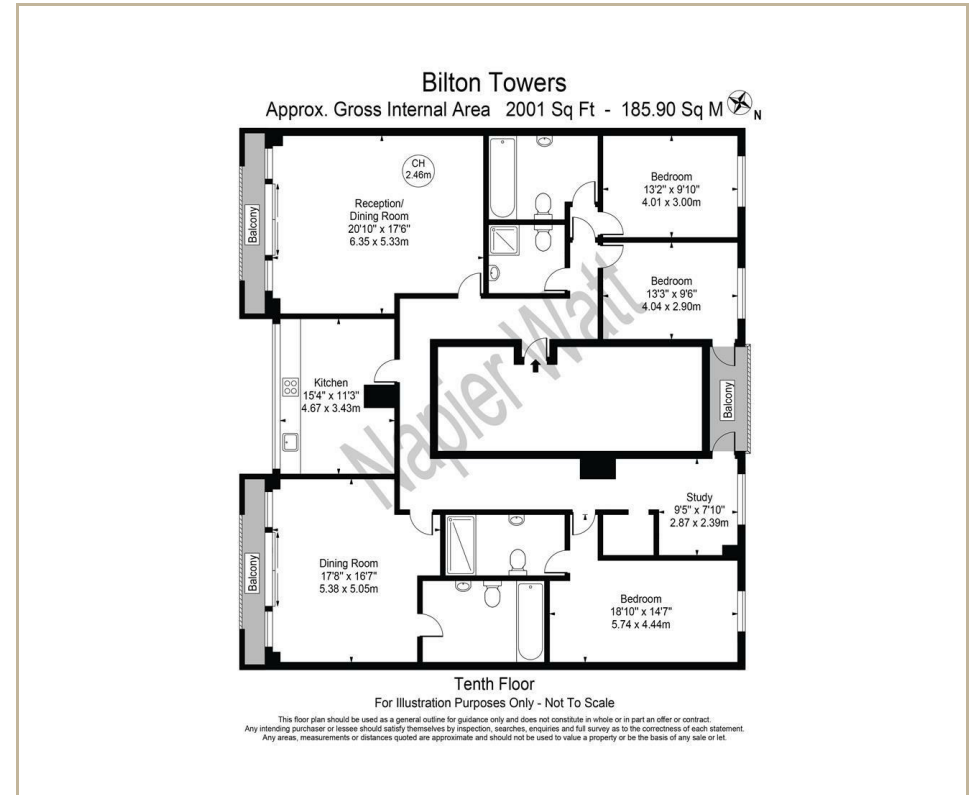
NAPIER WATT
PROPERTY CONSULTANTS

Description

AQUIRED FOR BUYER DECEMBER 2021 - More Similar Properties Required

Situated in the highly-sought after Bilton Towers moments from Hyde Park and Oxford Street, is this spectacular four-bedroom, three-bathroom apartment nestled on the 10th floor. Requiring modernisation, this property offers panoramic views over the London Skyline, and benefits from a courtyard garden,

direct lift access, and 24-hour porterage service. Comprising four double bedrooms, three bathrooms (all en suite), two guest cloakrooms, a spacious open-plan kitchen and reception room as well as three private balconies. Bilton Towers is conveniently located for the many amenities of Oxford Street and Bond Street as well as the prestigious restaurants and bars in Marylebone and Mayfair. Transport links including Marble Arch (Central Line) and Bond Street (Central and Jubilee Line) Underground Stations.



TERMS

99 years (less 15 days) from 29 September 1949 ie 27 years
£320,000. and Insurance rent

For Clarification we wish to inform prospective purchasers that we have prepared these sales particulars as a general guide. We have not carried out a survey, nor tested the services, appliances and specific fittings. Room sizes are approximate and rounded: they are taken between internal wall surfaces and therefore include cupboards/shelves, etc. Accordingly, they should not be relied upon for carpets and furnishings. Formal notice is given that all fixtures and fittings, carpeting, curtains/blinds and kitchen equipment, whether fitted or not, are deemed to be removable by the vendor unless specifically itemised within these sales particulars.

T. +44 (0) 20 7935 0011
E. enquire@napierwatt.co.uk
WWW.NAPIERWATT.CO.UK

NAPIER WATT
PROPERTY CONSULTANTS